

# The Tree of Empowerment



CALD COVID-19 Health Engagement Project (CCHEP)

## Community Led Action

### *Communities supporting communities*

Bold, Innovative Projects

- Partnership approach
- Cross cultural
- Intergenerational
- Holistic

## Entrust

### *You take the lead*

- Grass Roots initiatives
- Partnership approach
- Advocacy
- Resource Pooling
- Endorsement

## Connect

### *Let's talk*

- Workshops
- Community Conversations
- Question and answer sessions

## Support

### *It's time to work together*

- Advisory Committee
- Co-designed and/or co-facilitated workshops

## Update

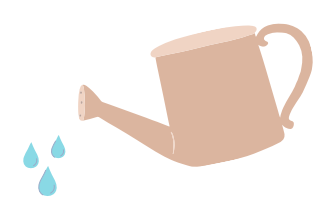
### *This is what we know*

- Digital messaging
- Fact Sheet
- Recorded messaging
- Community information sessions

## Listen

### *What do you think?*

- Community Conversations
- Information sessions



# The Tree of Empowerment



CALD COVID-19 Health Engagement  
Project (CCHPEP)

## A model created to show the importance of each step in CALD Community Engagement

Strong trees are deeply rooted in the earth, those roots form important connection and sustain life. Similarly, long lasting community relationships are founded upon an openness and willingness to share what is known, and in turn listen deeply to different perspectives on this knowledge. This step of engagement is a two-way exchange, building connection and growing trust.

The trunk of the tree provides a solid and firm support. Likewise, engagement needs time and opportunity for talking and working together. Many roots can come together above the ground as a firm tree trunk, working together to solve problems through messaging, advice, co-designed and co-facilitated workshops, which strengthens community engagement and increases the impact on community.

The branches of a tree provide structural support for leaves fruits and flowers and are a vessel of nourishment. The next step of engagement – Entrust – provides the structure, platform and advocacy for community to take the lead. The branches step offers a partnership approach to community and breaks down barriers for resource pooling and endorsement.

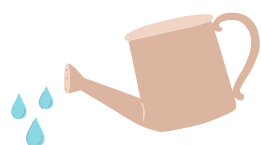
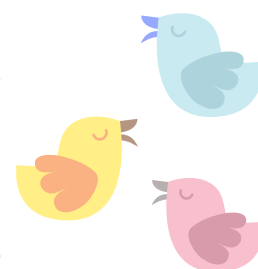
The leaves of the tree provide nourishment from the sun, combining it with water and carbon dioxide to breathe life and energy into the world. Community led action, is an exciting product of the community engagement model. When communities support communities through authentic partnerships, you see bold, innovative projects that have the platform, capacity and community trust to be cross cultural, intergenerational and holistic.



Birds fly in from afar, they assess their new home from the branches of a tree. They watch, they sing, they build their nests and raise their families. Migrants find themselves in a new community and one that is welcoming, offering real opportunities for belonging will support them to settle well. When they are happy birds lead their flock in thriving, fulfilling lives.

An engaged community is one that has a broad range of community leaders engaged that work collaboratively for best outcomes. There are over 800 bird species in Australia, and their beauty and strength is in their difference. They each have different traits and experiences.

The Tree of Empowerment model acknowledges the importance of providing opportunities for many leaders with different opinions, life experiences and cultural practices. This model encourages difference to be respected and considered. Strength in diversity is realised when we commit to working with a range of community leaders with a broad range of varying opinions and approaches. The model challenges us to ensure there is always opportunity and safety for difference. This approach provides a strong platform to build broad, multi-layered trust and confidence in community.



Flourishing trees are watered regularly. The watering can emphasises the nourishing element of the model. Impactful, sustainable community engagement comes from trusting relationships that are strengthened through regular connection, celebration of achievement, opportunity for reflection and evaluation of approach. Achievement of great, bold and ambitious outcomes is only possible when there is investment in growth.

# The Tree of Empowerment

Stakeholder CALD Community Consultation Tool

An effective community consultation model that is strengths based



CALD COVID-19 Health Engagement Project (CCHEP)

**Community Led Action**  
*Communities supporting communities*



**Entrust**  
*You take the lead*



**Connect**  
*Let's talk*

**Support**  
*It's time to work together*



**Update**  
*This is what we know*



**Listen**  
*What do you think?*

